

D

C

B

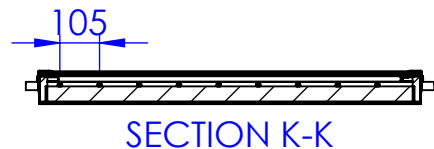
A

D

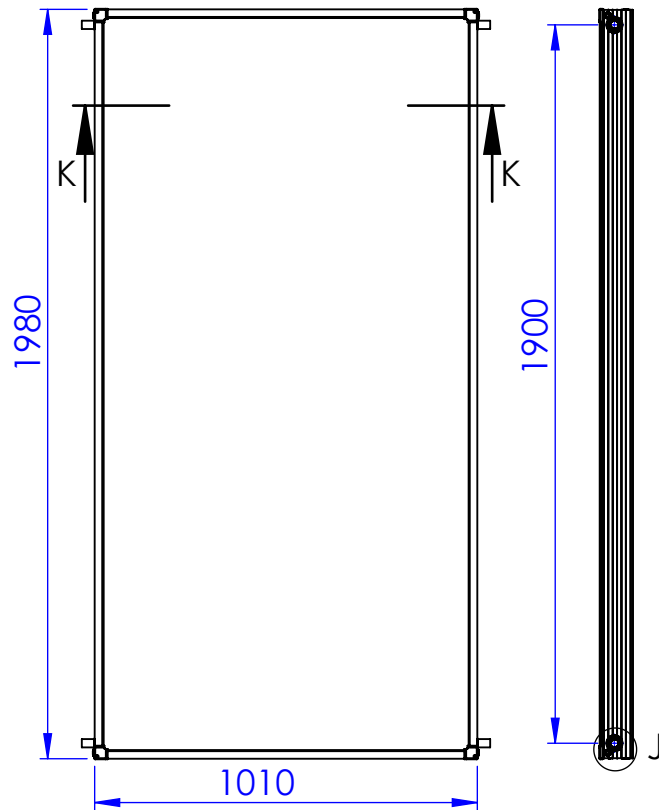
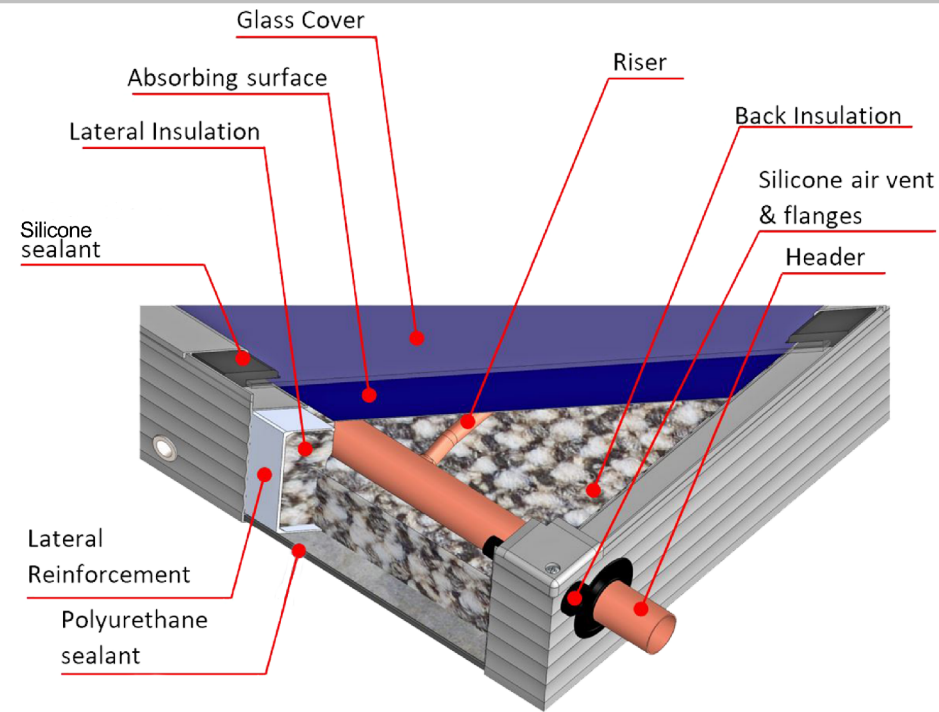
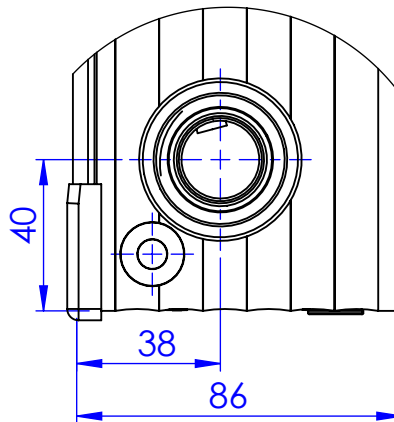
C

B

A



DETAIL J
SCALE 1 : 2



ITEM	MATERIAL	CHARACTERISTICS
FRAME	ALUMINUM	POWDER COATED
ABSORBER	ALUMINUM SHEET	SELECTIVE PVD COATED
RISER	COPPER	ø8X0.4mm
HEADER	COPPER	ø22X0.7mm
FRONT COVER	GLASS	LOW IRON/TEMPERED/3.2mm
BACK INSULATION	MINERAL WOOL	40mm, 50kg/m³
LATERAL INSULATION	MINERAL WOOL	20mm
REINFORCEMENT	ALUMINUM	"Π" PROFILE ON 4 SIDES
BACK COVER	ALUZINC	0.4mm

UNLESS OTHERWISE SPECIFIED:
DIMENSIONS ARE IN MILLIMETERS
SURFACE FINISH:
TOLERANCES:
LINEAR: ±0.2
ANGULAR: ±0.2

This design is the sole property of Papaemmanouel SA and protected under the Copyright Laws of Greece and EU. Any kind of reproduction or publication of the work illustrated within this design, without the written consent of Papaemmanouel SA is strictly prohibited.



REVISION 14-Oct-19

DO NOT SCALE DRAWING

	NAME	SIGNATURE	DATE
DRAWN	Ioannis Gegakis		30-4-18
CHK'D	Manos Monagios		
APPVD	Manos Monagios		
MFG			
Q.A			

THERMAL LIQUID CAPACITY: 1.42lt
APERTURE AREA: 1.86m²

TITLE:
FOXALc-2.00m² Vertical type-D

DWG NO. FPC300418003

A4

WEIGHT:

SCALE:1:20

SHEET 3 OF 10